



C2 R2 MAX

F21

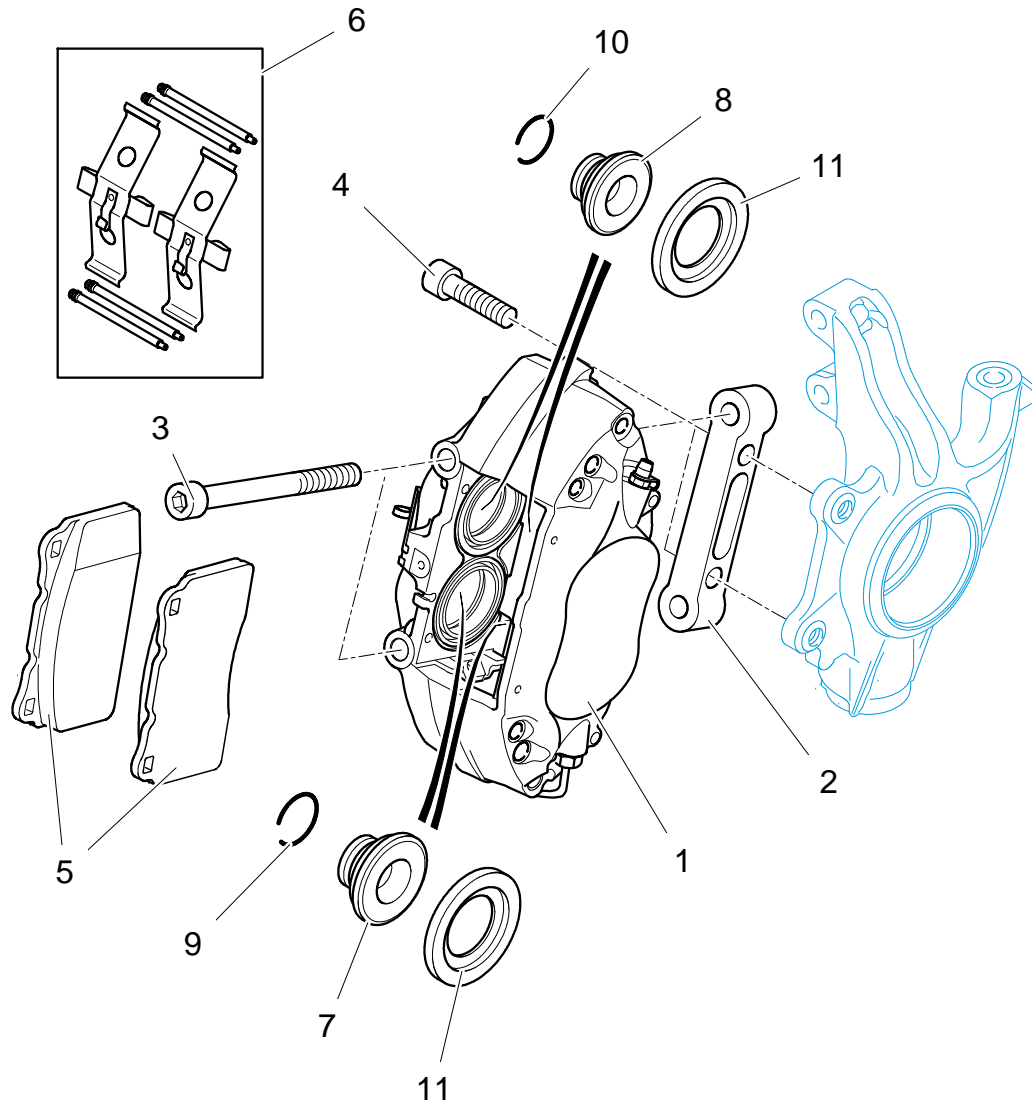
FRONT CALIPER





C2R2MAX

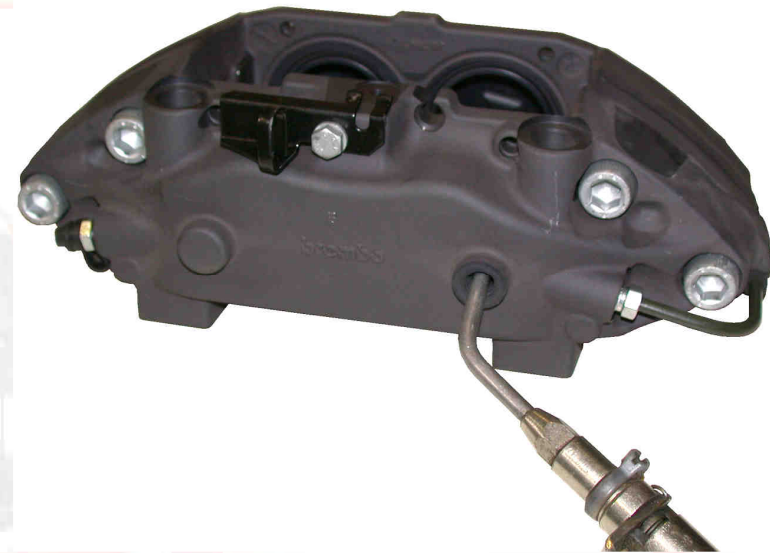
Version 02 – 02 April 2009



Ref	Part Number	Qty	Description
1	BCSP4401F4	1	Left front caliper - asphalt
1	BCSP4401F5	1	Right front caliper - asphalt
2	1F2162760A	2	Front caliper mounting plate, asphalt, Pagid RS15
3	CS530145ST	4	Screw for fixing caliper on plate, HSHC M12x150 Lg45 CI12.9
4	CS530130ST	4	Screw for fixing plate on brake-shoe pin, HSHC M14x200 Lg 100 CI12.9
5	1F2161317A	1	Front brake pad set - asphalt
6	BCSP4427C0	1	Brake pad fixing kit
7	1F2162823A	4	Caliper piston insert D44
8	1F2162824A	4	Caliper piston insert D40
9	1F2163237A	4	Retaining ring SC25
10	1F2163236A	4	Retaining ring SC22
11	BCSP443516	2	Seal kit

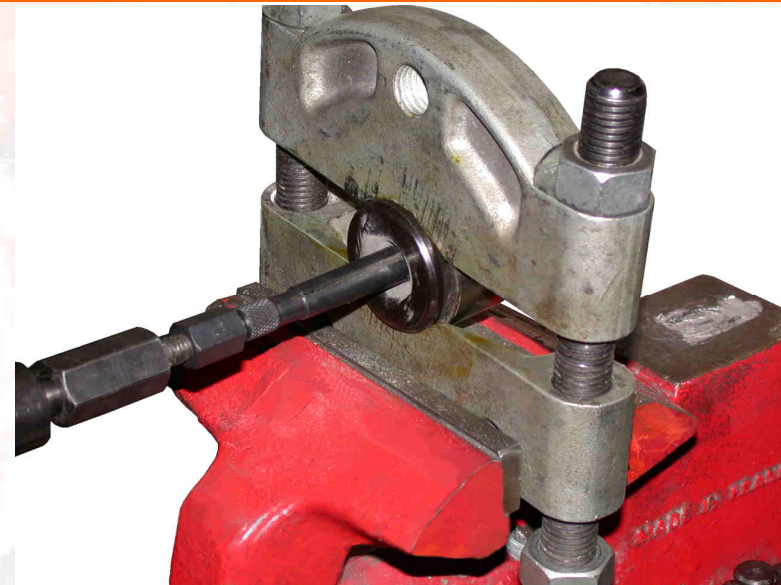
Assembling piston inserts.

Remove the original pistons using an air jet (see photo opposite), taking care not to damage them.



Remove the "bakelite" inserts, taking great care not to damage or scratch the pistons (reused).

If necessary, warm the piston up slightly so that the insert is easier to free.



F21
Front caliper



F
BRAKES

Fit the retaining rings on the inserts, taking care to respect the following order:

Large piston:

- Insert [ref. 7](#)
- Retaining ring [ref. 9](#)

Small piston:

- Insert [ref. 8](#)
- Retaining ring [ref. 10](#)



Clean and remove traces of adhesive using a scraper, and finish with a cleaning pad.

The surface must be clean, with no traces or protrusions.



Insert the assembled inserts (large and small Ø) with their respective pistons.

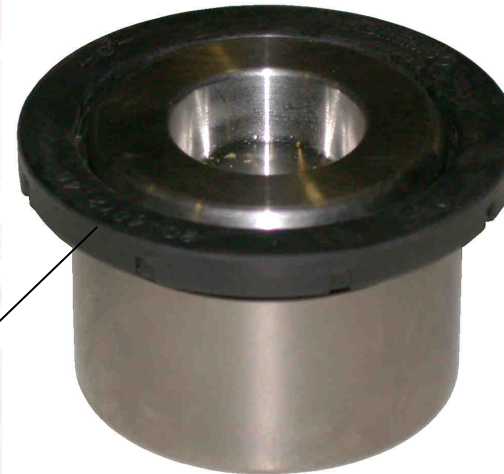
Note: the diameters and toruses of the clips have been calculated based on the high temperature generated by the brakes. The assembled inserts do not therefore enter easily into the pistons.

If necessary, use two flat screwdrivers in order to press on the retaining ring and reduce its Ø.



Fit the seals ([ref. 11](#)) on their respective pistons, in the same direction as the standard assembly, as shown in the photo opposite.

11



F21
Front caliper



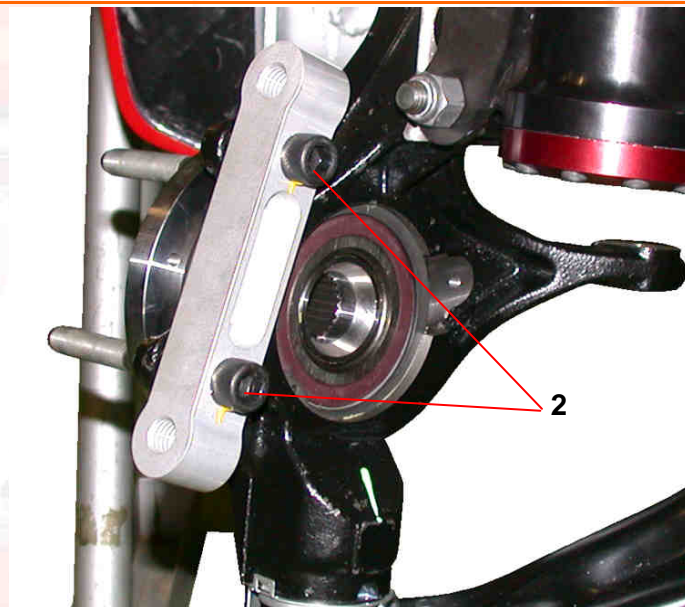
F
BRAKES

Lubricate the external diameter of the piston seals, and fit the piston assemblies in the calipers, as shown in the photo opposite.



Assembling the front caliper - asphalt

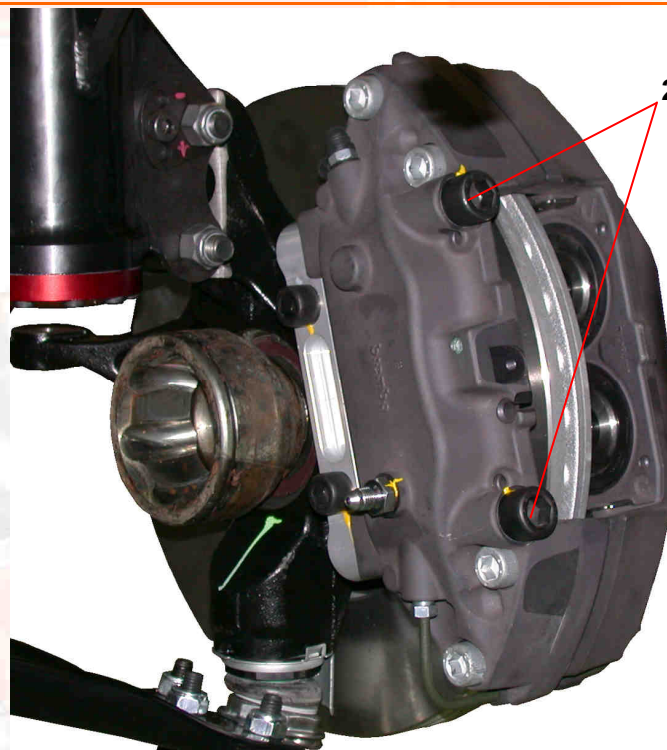
Fit the mounting plates on the brake-shoe pin ([ref. 2](#)) using screws ([ref. 4](#)).



8 m.kg

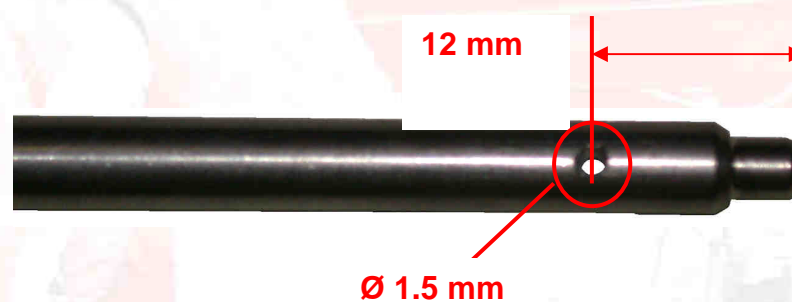


Fit the calipers on the plates, using screws ([ref. 3](#)).



10 m.kg

Drill the brake pad retaining pins ([ref. 6](#)), as shown in the diagram opposite.

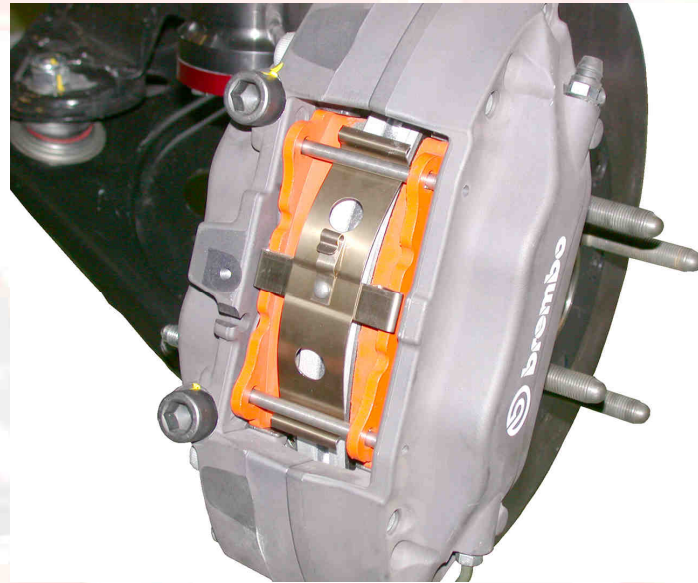


F21
Front caliper

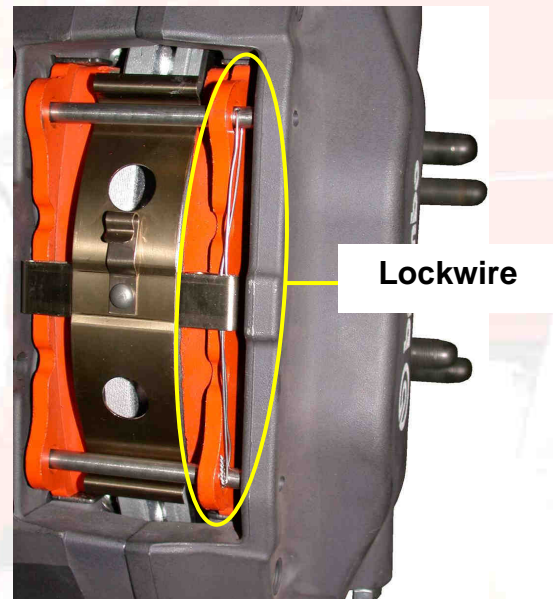


F
BRAKES

Fit the brake disk pads on the caliper with the anti-vibration plate and the pins drilled beforehand.



Connect the two brake pad retaining pins by lockwire, as shown in the photo opposite.





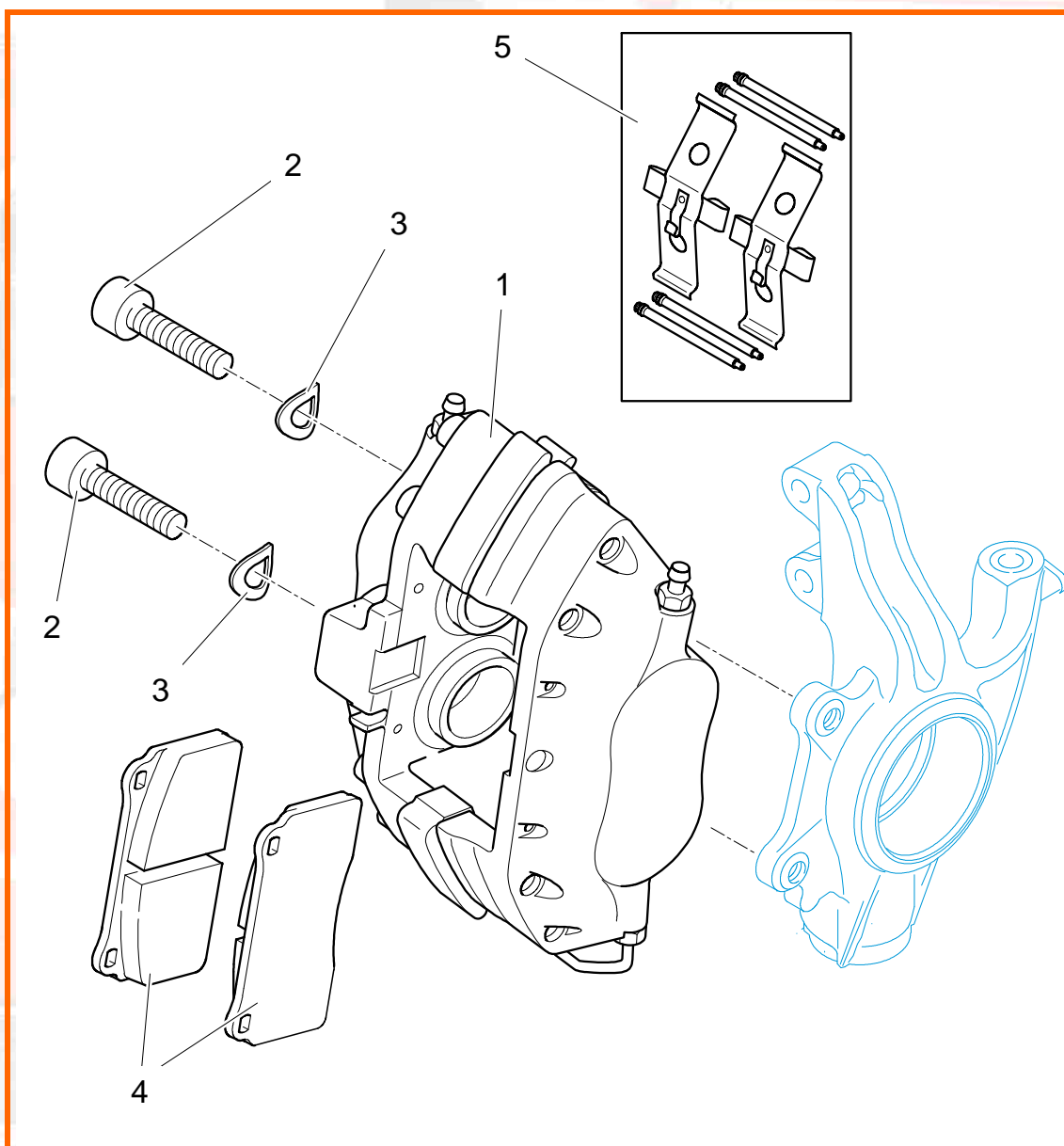
F21
Front caliper



F
BRAKES



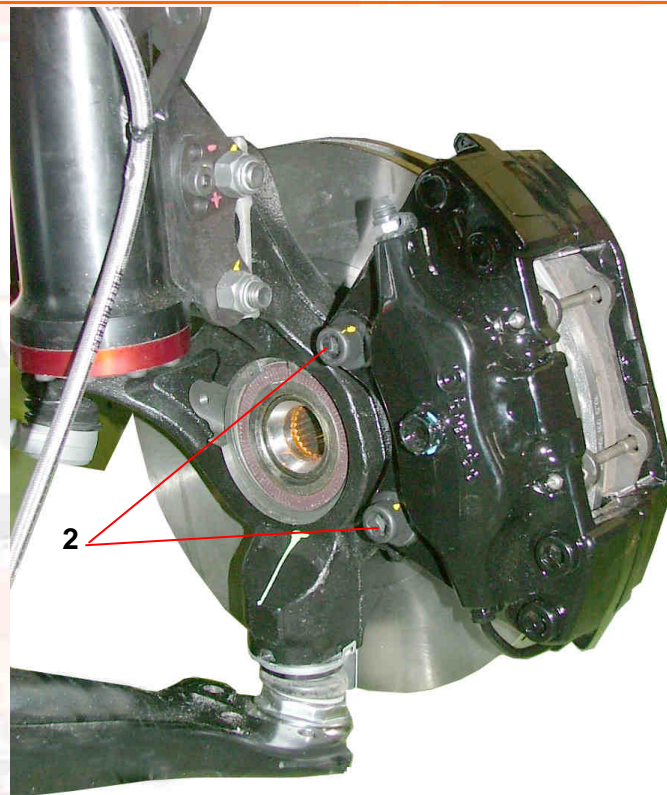
Version 02 – 02 April 2009

[illegible]

Assembling the front caliper - dirt track

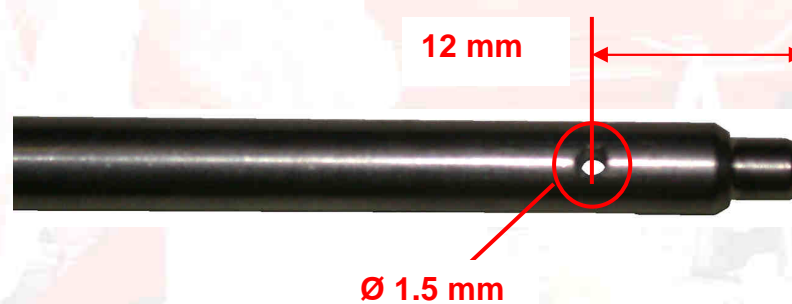


Fit the calipers on the brake-shoe pins using screws ([ref. 2](#)) and washers ([ref. 3](#)).



10 m.kg

Drill the brake pad retaining pins ([ref. 6](#)), as shown in the diagram opposite.

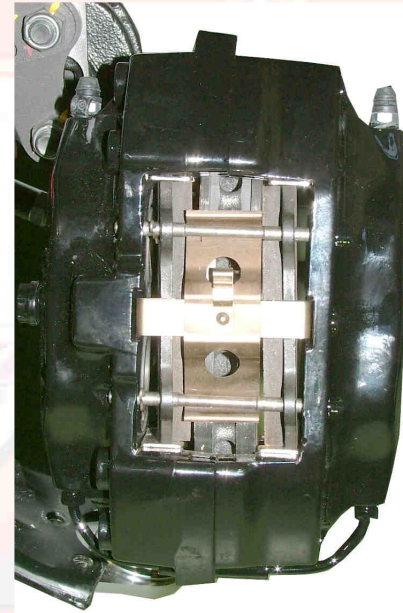


F21
Front caliper



F
BRAKES

Fit the brake disk pads on the caliper with the anti-vibration plate and the pins drilled beforehand.



Connect the two brake pad retaining pins by lockwire, as shown for asphalt **page 8**.